

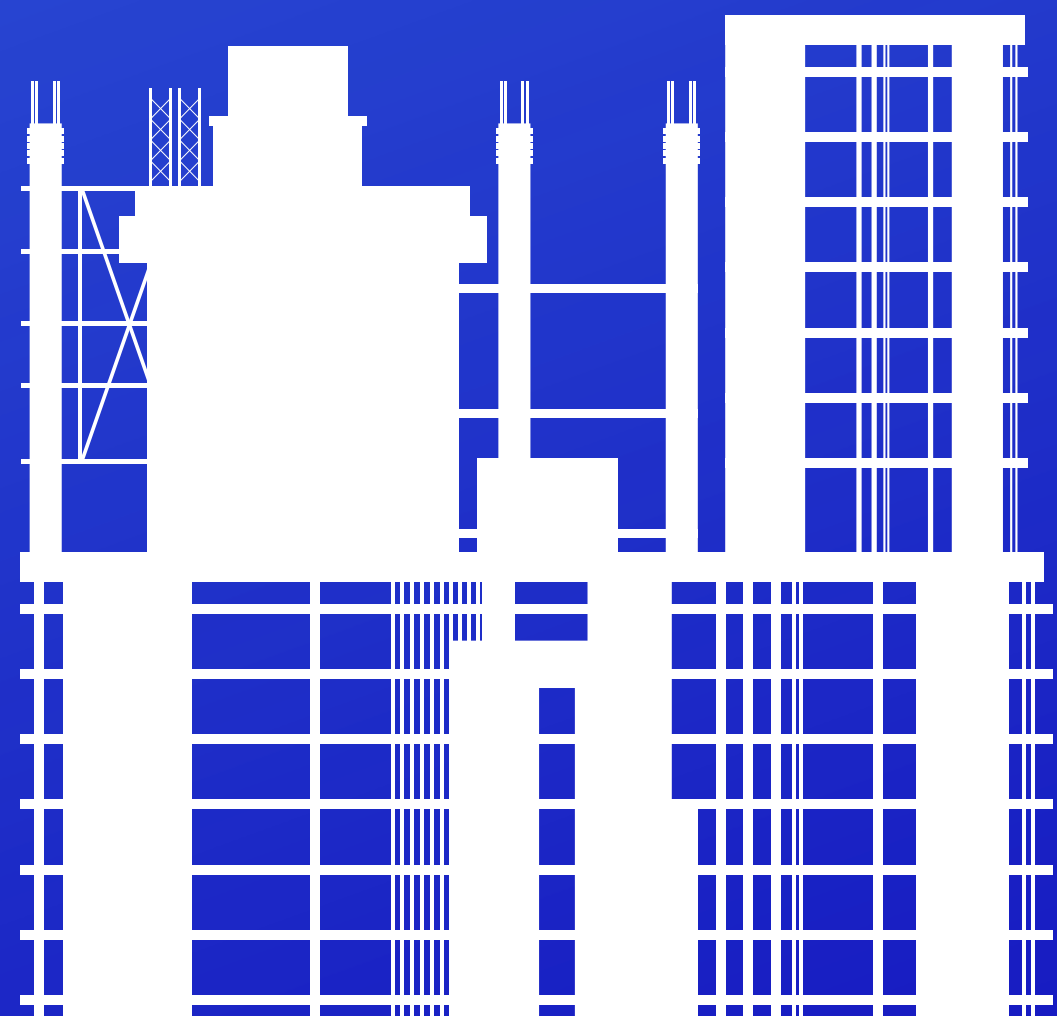
# Our Covers ...Inlet, Conical and Pitched

Our Glass Reinforced Plastic covers are specialized for the purpose, and we design and manufacture a wide range of GRP covers.

All of our covers are specially designed and manufactured; whatever you see can be adapted for its use in your project.

For any inquiries regarding our GRP Covers, get in touch through our phonenumber and we can provide a quote for you- the time that the quote will take is dependant on the complexity of your requirements, so please keep that in mind.

[corporateengineeringltd.co.uk](http://corporateengineeringltd.co.uk)



# Inlets ...bespoke and adaptable

No two inlet works are the same- each inlet requiring an individually manufactured and designed schematic. Whether the covers are to fit a newly built inlet works or are to be retrofitted to an existing structure, Corporate Engineering will develop a design concept to suit.

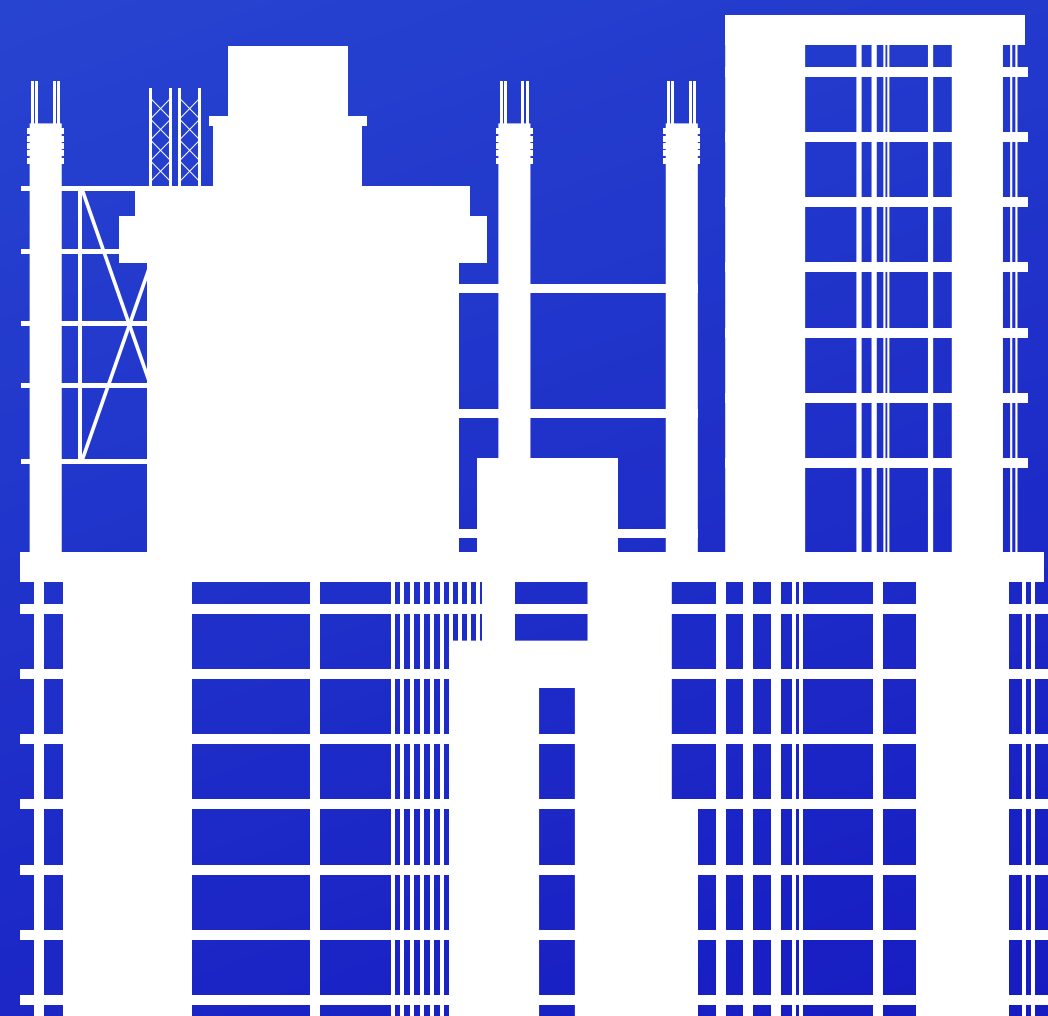
For new works, we are happy to offer advice on the inlet work's design to enable efficient covering to minimize odor escape. By following some simple guidelines, the efficiency of the covers can be increased dramatically while keeping costs to a minimum. E

ven the most complex inlet works can be retro-fitted with odour containment covers. Corporate Engineering can visit the site and lead you through the preparation work that is required to allow GRP covers to be installed.

Where access for operations personnel is required, cover panels can be designed to support imposed loads of up to 5kN/m<sup>2</sup>. Slip deterrent surfaces and handrailing are normally supplied in these areas. Corporate Engineering can provide examples of covers to:

- Inlet wet wells
- Screw pumping stations
- Inlet screens
- Distribution, by-pass and flume channels
- Grit removal lanes
- Fat Oil Grease and Grit (FOGG) lanes
- Distribution Chambers

[corporateengineeringltd.co.uk](http://corporateengineeringltd.co.uk)





# Conical Covers ...an economical alternative

Corporate Engineering can also supply conical covers.

Where simple odour containment covers are required and access onto it is not required, conical covers can be an economical option.

Corporate Engineering are currently redesigning their range of conical covers and we hope to be able to offer covers to suit tanks from 5 to 16.22m diameter in the near future. Conical covers are now available up to 11.1m diameter, and covers up to 15m diameter are coming soon.

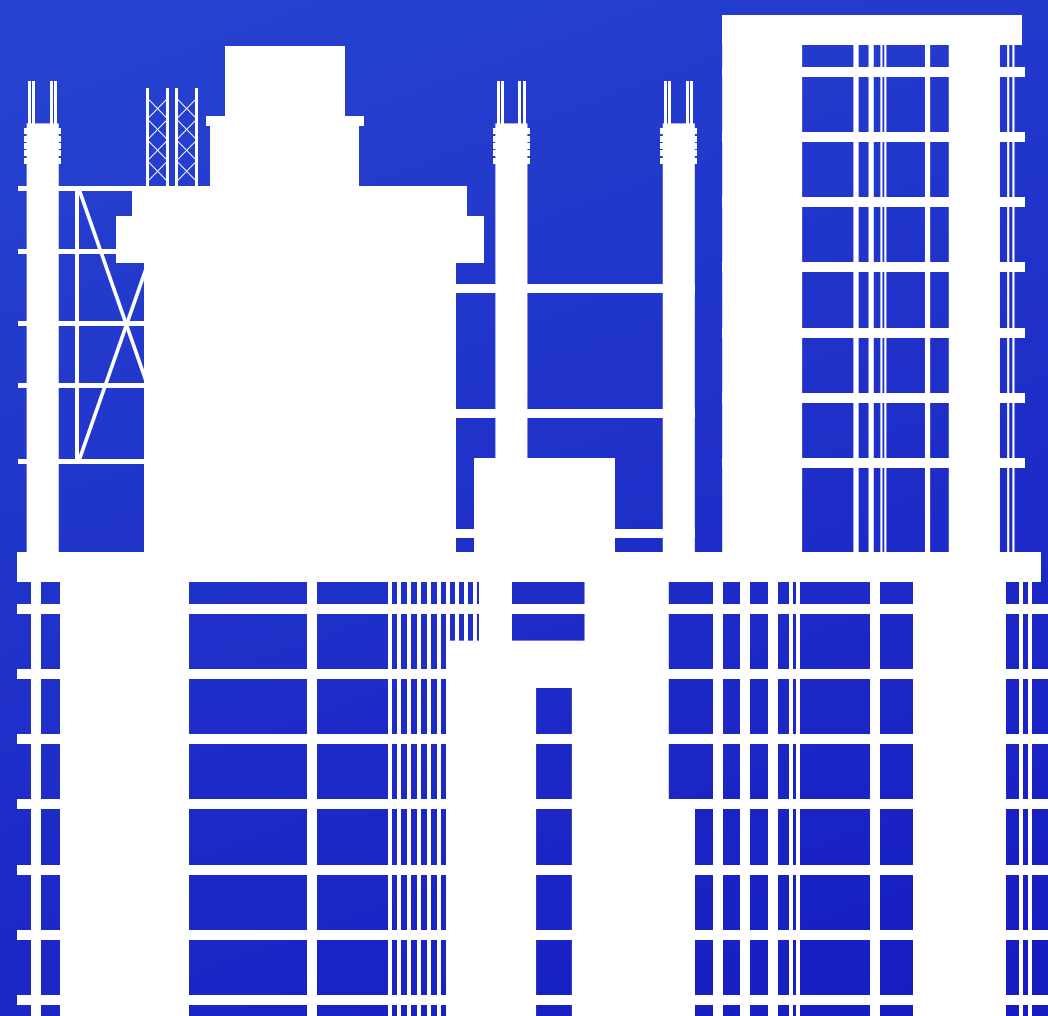
Should you need more details regarding this, please do not hesitate to contact us. Our Conical covers are designed in accordance with WIMES 8.05 and the relevant utility specifications.

These also include standard duty (0.75kN/m<sup>2</sup>) to BS EN-1991-1-1:2002. Our structural design is verified using the latest FEA software, and any colour from the RAL or BS4800 ranges. This includes robust cover segments that are easy to handle and assemble.

We can provide efficient stacking for economical transport, and access manways - hinged and lockable c/w removable stainless steel safety grille. The conical covers feature mixer and aerator hatches, and flanged upstands for odour extraction instruments. Air inlets c/w bird or insect mesh.

[corporateengineeringltd.co.uk](http://corporateengineeringltd.co.uk)

**Citation  
APPROVED**



# Pitched Covers ...simple and effective

Where simple odour containment covers are required, conical covers are an economical option. Our Conical covers are designed in accordance with WIMES 8.05 and the relevant customer specifications. Cover design has been verified using the latest FEA software. Conical covers are now available for steel and concrete tanks up to 16.22m diameter. Corporate Engineering offers a full site survey and installation service if required.

## Cover features include:

- Robust cover segments that are easy to handle and assemble
- Efficient stacking for economical transport
- Full range of access manways - hinged and lockable c/w stainless-steel safety grilles
- Mixer and aerator hatches
- Flanged connections for odour extraction and instruments
- Air inlets c/w bird or insect mesh
- Any colour from the RAL or BS4800 ranges

For more details regarding these covers, please do not hesitate to contact us.

[corporateengineeringltd.co.uk](http://corporateengineeringltd.co.uk)

